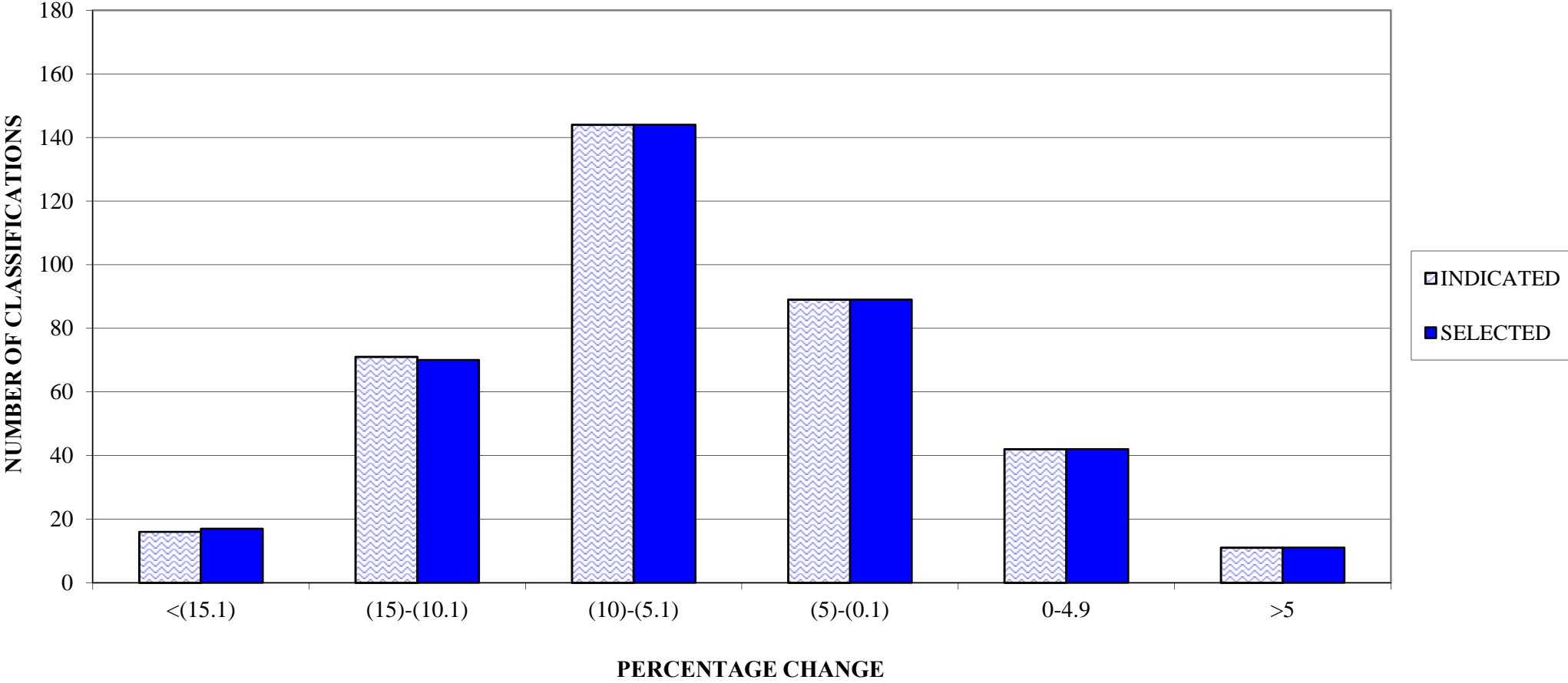


PENNSYLVANIA COMPENSATION RATING BUREAU

Distribution of Loss Cost % Changes

These percent changes are based on pre-surcharge loss costs.

**PENNSYLVANIA COMPENSATION RATING BUREAU**  
**APRIL 1, 2017 LOSS COST FILING**  
**DISTRIBUTION OF LOSS COST PERCENTAGE CHANGES (PRE-SURCHARGE)**



### **CLASSES CAPPED AT LOWER BOUND**

<b>CLASS</b>	<b>PRE-CAPPED % CHANGE</b>	<b>POST-CAPPED % CHANGE</b>
889	-11.5%	-15.4%
956	-33.3%	-25.0%

### **CLASSES CAPPED AT UPPER BOUND**

<b>CLASS</b>	<b>PRE-CAPPED % CHANGE</b>	<b>POST-CAPPED % CHANGE</b>
970	39.9%	17.9%