

PENNSYLVANIA COMPENSATION RATING BUREAU

Distribution of Loss Cost % Changes

These percent changes are based on pre-surcharge loss costs.

This exhibit includes only information on the direct employment classes.

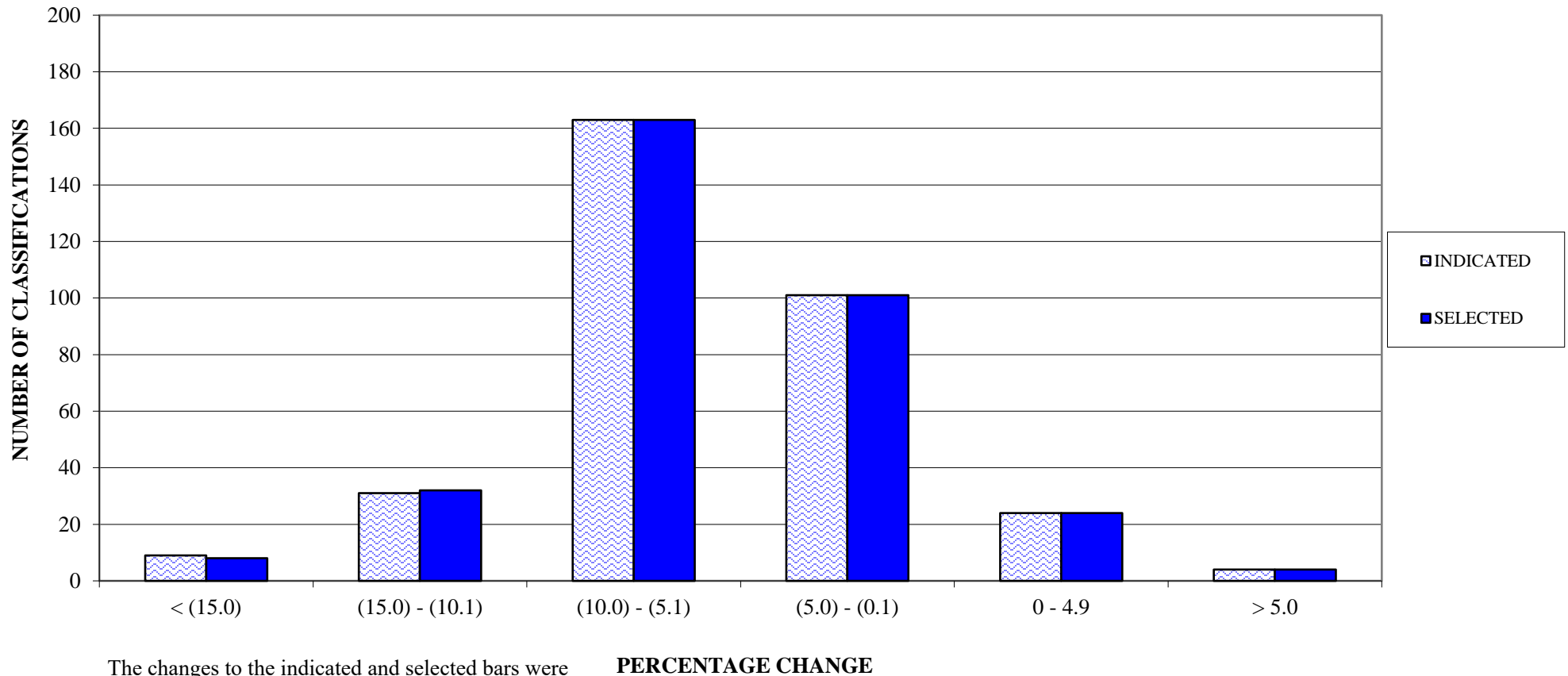
For information on the temporary staffing class changes, please refer to Exhibit 31.

**PENNSYLVANIA COMPENSATION RATING BUREAU**

**April 1, 2022**

**LOSS COST FILING**

**DISTRIBUTION OF LOSS COST PERCENTAGE CHANGES (PRE-SURCHARGE)**



The changes to the indicated and selected bars were due to the effects of secondary capping on class 953.

**PERCENTAGE CHANGE**

NOTE: This exhibit excludes temporary staffing classes